

Meet our

AVAILABLE

**BUILDING
FOR LEASE:
EQ**



Divisible Building

Land Area (ft²): 427,189

Total Leasable Area (ft²): 204,924

FACILITY SPECIFICATIONS

- **Manufacturing / Warehouse Areas (SF):** 146390.00
- **First Floor Office Space & Mezzanine (SF):** 26,848
- **Clear Height:** 25" & 23"
- **Bay Size:** 44 x 30
- **Loading Docks:** 8
- **Concrete ramps:** 2
- **Dock High building**
- **Levelers:** 25,000 pounds (8)
- **Structure:** Steel

- **Floor:** 5' Reinforced Concrete
- **Walls:** 5" Precast Concrete
- **Roof:** R-19 / Insulation
- **Lighting:** T5 Fluorescent / 30 fc
- **FPS:** Sprinkler system
- **Parking Spaces:** 237
- **Energy Capacity:** 3,000 KVAs
- **Area for Expansion:** Yes

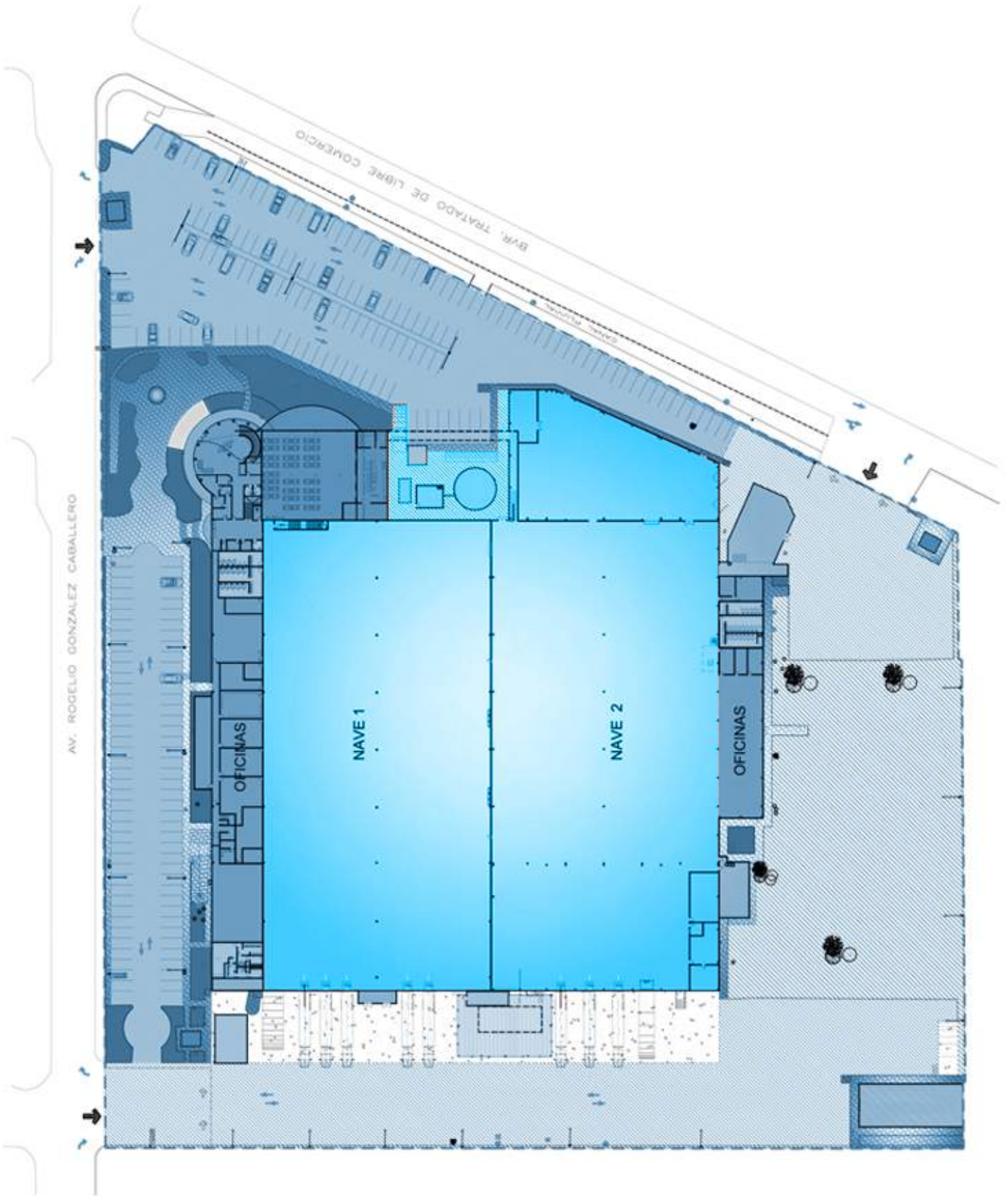


CONTACT US:
industrial@stiva.com

Alejandro Herreros
Commercial Manager -
alejandro.herreros@stiva.com

T. (81) 8173 1300
stiva.com





Alejandro Herreros
Commercial Manager -
alejandros.herreros@stiva.com

T. (81) 8173 1300
stiva.com

